

MIDLAND PUBLIC SCHOOLS 2015 BOND UPDATE

June 25th, 2018

Construction/In Progress:

Chestnut Hill/Siebert Renovations and Additions:

- Demolition 100% complete.
- Abatement underway.
- Key item procurement:
 - Flooring
 - Unit Ventilators
 - Air Handling Units
 - Exterior Doors
 - Windows and Glazing

Woodcrest Addition:

- Steel and metal deck underway.
- Roofing to begin shortly.

Look Ahead:

- Continuing asbestos abatement at Chestnut Hill and Siebert.
- Begin installation of exterior glazing and window frame system at Chestnut Hill and Siebert.



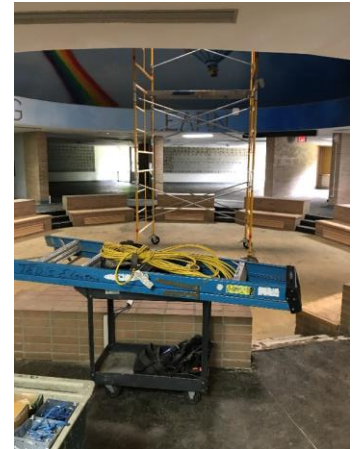
Classroom before demolition at Chestnut Hill



Classroom after demolition at Chestnut Hill



Chestnut Hill maker space before demolition



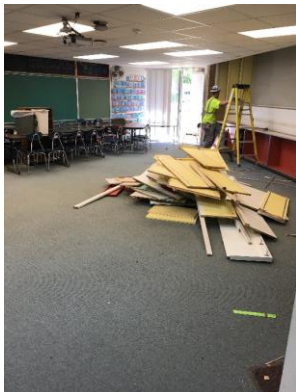
Chestnut Hill maker space after demolition



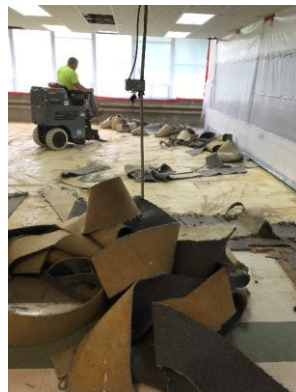
Unit ventilators delivered at Chestnut Hill



Drywall soffit at Siebert already being installed



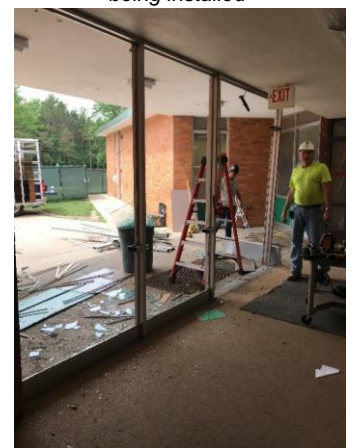
Casework demolition at Chestnut Hill



Carpet removal at Chestnut Hill



Water retention system at Siebert



Glass door frame demolition at Siebert